



Whilst every effort is made to give a fair description, the accuracy of these particulars is not guaranteed, neither do they constitute an offer or contract.

MATHESONS ESTATE AGENTS have not tested any apparatus, equipment, fitting or services and so cannot verify that they are in working order. The buyer is advised to obtain verification from their solicitor or surveyor. Measurements are correct to within +/-6 A sonic tape is used. None of the statements contained in these particulars or any of our properties are to be relied upon as a representation of fact.

166 Manor Park Road
Harlesden
London
NW10 4JT
T: 020 8965 2250
E: sales@mathesonsestates.com
www.mathesonsestates.com


mathesons
INDEPENDENT ESTATE AGENTS

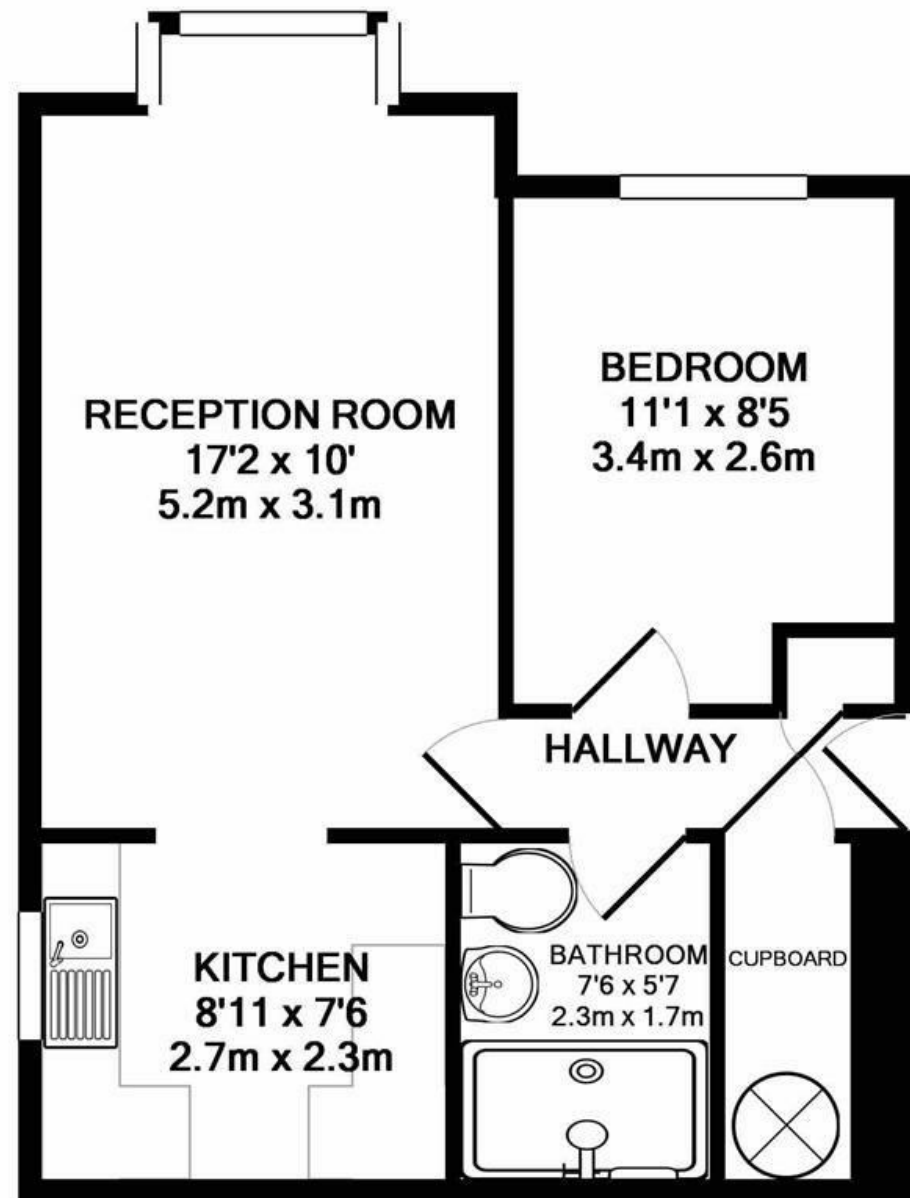
Cygnets Close, London, NW10 8TP Asking Price £250,000 Leasehold



KEY FEATURES:

- GROUND FLOOR
- LONG LEASE
- REFITTED BATHROOM
- VACANT
- NO UPPER CHAIN
- STORAGE HEATING
- INTERCOM SYSTEM
- CUL-DE-SAC LOCATION

MATHESONS are favoured to offer this well maintain GROUND FLOOR APARTMENT with no upper chain. The property benefits from a REFITTED BATHROOM, NEW CARPETS, GOOD DECORATIVE ORDER THROUGHOUT, GOOD LEASE, INTERCOM SYSTEM. An internal viewing highly recommended to appreciate this purpose built block with COMMUNAL GARDENS AND PARKING FACILITIES, with good access to local amenities as the development is located just off the Brentfield Road close to the junction of the North Circular Road/ A406. With the nearest tube station is Harlesden (Bakerloo Line). The floor area is approximately 408 sq.ft (37.9 sq.m)



TOTAL APPROX. FLOOR AREA 408 SQ.FT. (37.9 SQ.M.)

Whilst every attempt has been made to ensure the accuracy of the floor plan contained here, measurements of doors, windows, rooms and any other items are approximate and no responsibility is taken for any error, omission, or mis-statement. This plan is for illustrative purposes only and should be used as such by any prospective purchaser. The services, systems and appliances shown have not been tested and no guarantee as to their operability or efficiency can be given

Made with Metropix ©2019

